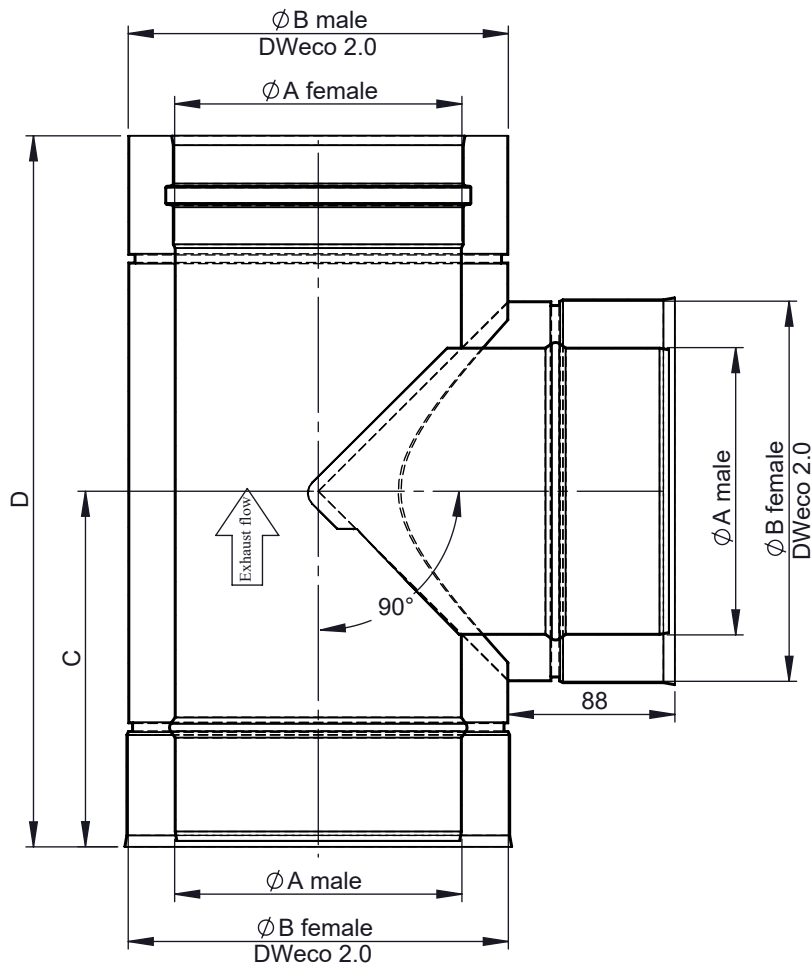
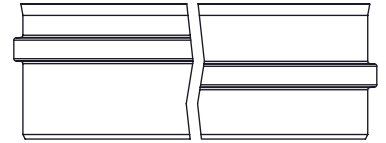
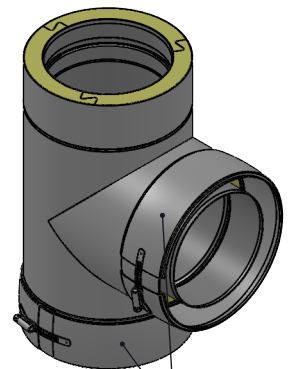


Possible type of female part "FU"



1:5 (Ø0150)



Incl. system clamp

Ø	080	100	115	120	130	140	150	160	180	200	225	250	300	350	400	450	500	550	600
A	80	100	115	120	130	140	150	160	180	200	225	250	300	350	400	450	500	550	600
B	130	150	165	170	180	190	200	210	230	250	275	300	350	400	450	500	550	600	650
C	153	163	164	166	178	188	188	193	203	213	223	238	263	288	313	338	363	388	413
D	306	326	327	332	356	376	376	386	406	426	446	476	526	576	626	676	726	776	826
kg	2,00	2,3	2,5	2,6	3,0	3,3	3,4	3,7	4,2	4,8	5,5	6,3	8,0	110	13,2	15,7	18,4	21,2	24,2

notes:

ENCD

DIN ISO 13920 Tolerances B

revisions-no.

04

Jeremias[®]
CHIMNEY SYSTEMS

scale

1:5

format

A4

sheet

1 of 1



date	name
drawn by 15.03.22	MSA
checked by 15.03.22	SWA
approved by 15.03.22	JWY
modified by	

description Pipe tee 90°

code 215-DWECO11 Ø

drawing-no. 02-35-2200-215